

World's largest and most comprehensive frozen block grinder programme?

Single or Double screw grinder? - It is your choice!

- For frozen blocks of meat raw materials?
- For fresh and frozen bones?
- For pre-broken whole pallets of frozen blocks/bones?

Grinding Capacities: 1000 - 20,000 kg/hour - 75 kW - 250 kW
(From Ø5 mm hole plate)



SINGLE WORM
*SuperGrind SG 550/310, Super Heavy Duty, Brutalis
160 - 250 kW*



SINGLE WORM
*MG 400 Heavy Duty
with extension infeed hopper*



DOUBLE WORM
CombiGrind CG 300

Whole pallet crusher or Block crusher?



Do you need to particle
reduce/crush whole pallets
of frozen (together) blocks?

See our solutions on page 7

Frozen Block Grinder Programme:	Motor/kW
SINGLE WORM/AUGER GRINDERS:	
SuperGrind SG 550/310 Super Heavy Duty, Brutalis	160-250 kW
SuperGrind SG 400/260	110-160 kW
MG 400 Super Heavy Duty, Brutalis	160-200 kW
MG 400 Heavy Duty	132-160kW
MG 400	90-110 kW
MG 330	75-90 kW
MG 250	55 kW
MG 225	37-45 kW
MG 200	30 kW
DOUBLE WORM/AUGER GRINDERS:	
CombiGrind CG 400 Heavy Duty, Brutalis	22 + 110 - 200 kW
CombiGrind CG 330 Heavy Duty	22 + 110 - 132 kW
CombiGrind CG 300 Heavy Duty	22 + 90 - 132 kW
CombiGrind CG 300	22 + 90 kW
CombiGrind CG 225	15 + 75 kW

Below you will see all our frozen block grinders. The top performer listed from the top.

SINGLE SCREW/WORM/AUGER GRINDERS:



SINGLE WORM GRINDER: SuperGrind SG 550/310

- Hole plate Ø550 mm.
- 160-250 kW



SINGLE WORM GRINDER: SuperGrind SG 400/260

Shown with optional safety cage.

- Hole plate Ø400 mm.
- 110-160 kW

Follow us on social media



scansteel foodtech A/S

info@scansteelfoodtech.com

Industrivej 6, 4200 Slagelse, Denmark

SINGLE SCREW/WORM/AUGER GRINDERS (cont.)



SINGLE WORM GRINDER: MG 400 Super Heavy Duty, Brutalis

- Hole plate Ø400 mm.
- 160-200 kW

 [Click for information.](#)



SINGLE WORM GRINDER: MG 400 Heavy Duty

Shown with optional extension infeed hopper.

- Hole plate Ø400 mm.
- 132-160 kW

 [Click for information.](#)



SINGLE WORM GRINDER: MG 400

- Hole plate Ø400 mm.
- 90-110 kW

 [Click for information.](#)

Shown with optional safety cage.

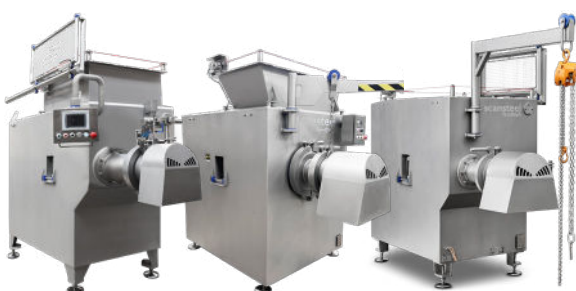


SINGLE WORM GRINDER: MG 330

- Hole plate Ø330 mm.
- 75-90 kW

 [Click for information.](#)

Shown with optional extension infeed hopper and optional Allen Bradley operator panel.



SINGLE WORM GRINDER: MG 200, MG 225 & MG 250

- Hole plate Ø200, Ø225 & Ø250 mm.
- 30 kW, 37-45 kW & 55 kW

Follow us on social media



scansteel foodtech A/S
info@scansteelfoodtech.com
Industrivej 6, 4200 Slagelse, Denmark

DOUBLE SCREW/WORM/AUGER GRINDERS:



DOUBLE WORM GRINDER: CombiGrind CG 400 Heavy Duty, Brutalis

- Hole plate Ø400 mm.
- 22 + 110-200 kW

 [Click for information.](#)



DOUBLE WORM GRINDER: CombiGrind CG 330 Heavy Duty

Shown with optional extension infeed hopper and load cells.

- Hole plate Ø330 mm.
- 22 + 110-132 kW

 [Click for information.](#)



DOUBLE WORM GRINDER: CombiGrind CG 300 Heavy Duty

Shown with optional extension infeed hopper and load cells.


- Hole plate Ø300 mm.
- 22 + 110-132 kW

 [Click for information.](#)



DOUBLE WORM GRINDER: CombiGrind CG 300

- Hole plate Ø300 mm.
- 22 + 90 kW

 [Click for information.](#)  [Click for video.](#)



DOUBLE WORM GRINDER: CombiGrind CG 225

- Hole plate Ø225 mm.
- 15 + 75 kW

Follow us on social media



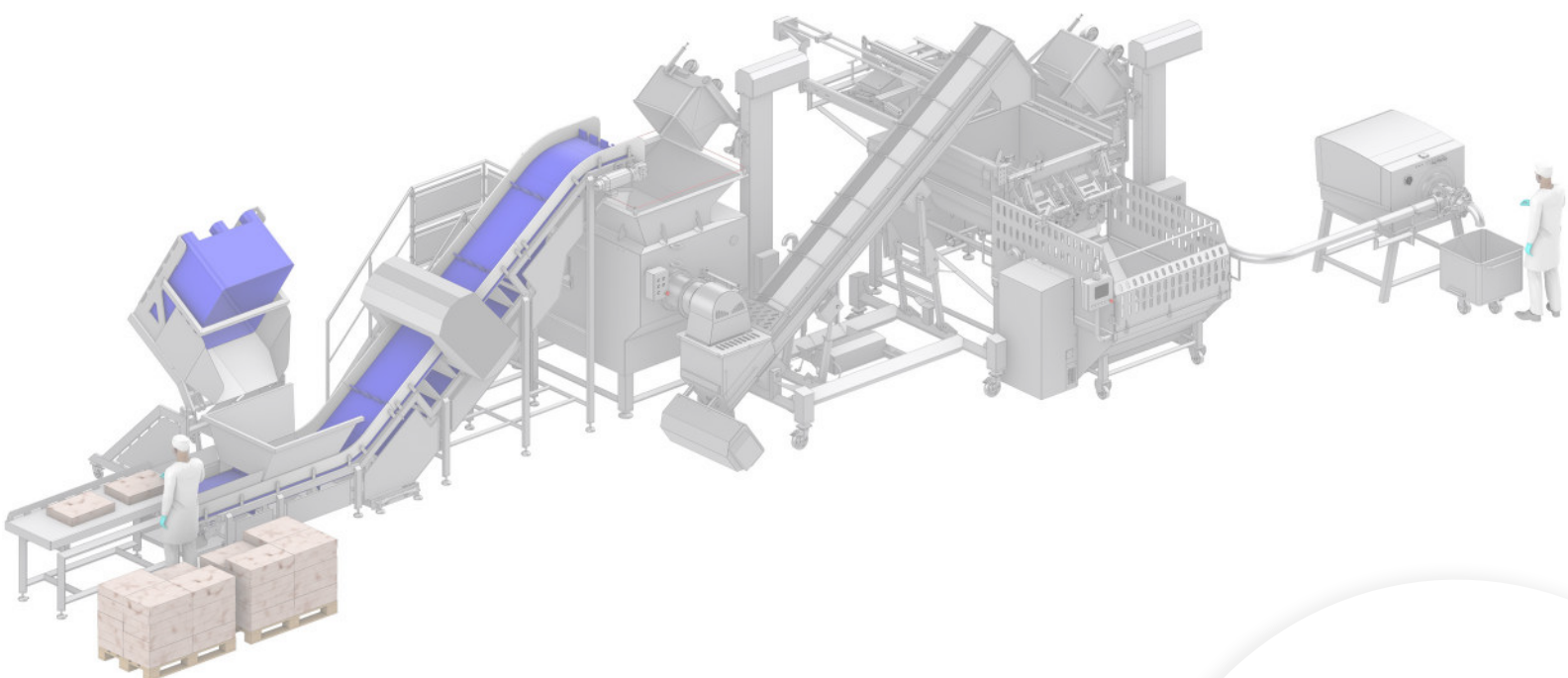
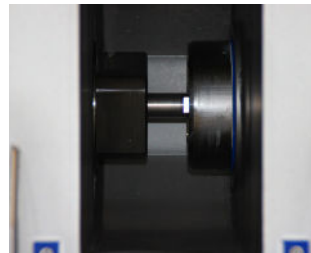
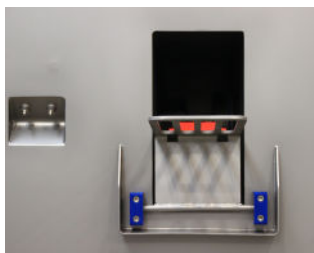
scansteel foodtech A/S
info@scansteelfoodtech.com
Industrivej 6, 4200 Slagelse, Denmark

HYGIENIC ZONE FOR SINGLE WORM/AUGER GRINDERS

A prime example of scansteel foodtech[®] hygienic design is given by the hygienic zone
– positioned between the gear box and the grinding worm/auger. Please see pictures below.

HYGIENIC ZONE FOR DOUBLE WORM/AUGER GRINDERS

A prime example of scansteel foodtech[®] hygienic design is given by the two hygienic zones
– one positioned between the gear box and feeding/breaking worm and one positioned between the gear box
and grinding worm/auger. Please see pictures below.



Follow us on social media



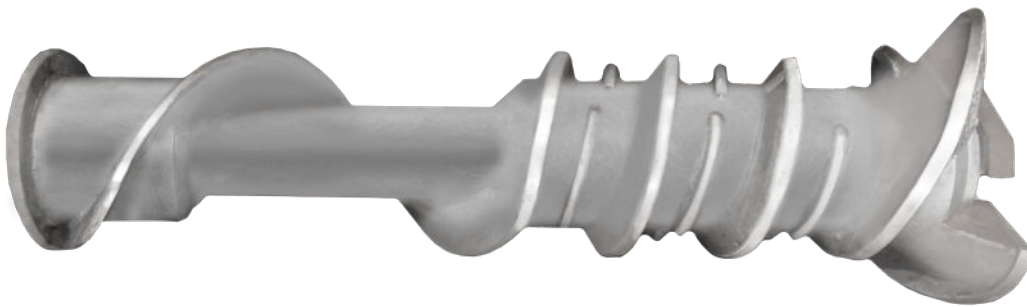
scansteel foodtech A/S

info@scansteelfoodtech.com

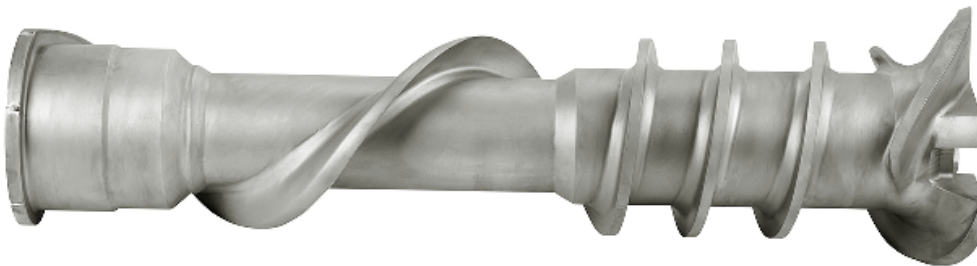
Industrivej 6, 4200 Slagelse, Denmark

scansteel[®]
foodtech

scansteel foodtech[®] Screw/Worms/Augers



- SuperGrind 550/310 worm/auger.



- SuperGrind 400/260 worm/auger.



- MG 400 worm/auger.



- CG 300 feeding/breaking worm/auger.



- CG 300 grinding worm/auger.

Follow us on social media



scansteel foodtech A/S
info@scansteelfoodtech.com
Industrivej 6, 4200 Slagelse, Denmark

Do you need to particle reduce/crush whole pallets of frozen (together) blocks?

- In one step?
- Or layer by layer?

WHOLE PALLET CRUSHER WPC 2000-Twin

 [Click for information.](#)  [Click for video.](#)



BLOCK CRUSHER BC 1000



BLOCK AND BARREL CRUSHER scanStructor

 [Click for information.](#)



Cut the Top

 [Click for information.](#)

Follow us on social media



scansteel foodtech A/S
info@scansteelfoodtech.com
Industrivej 6, 4200 Slagelse, Denmark